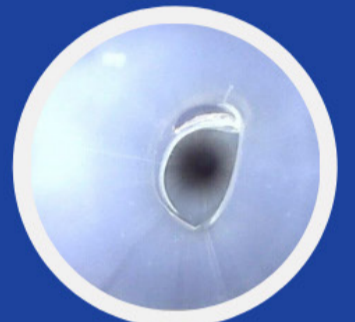
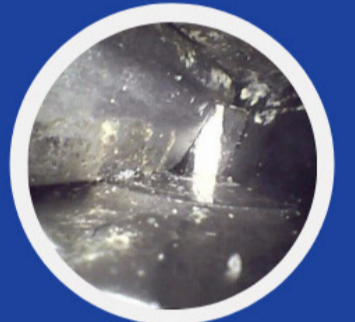


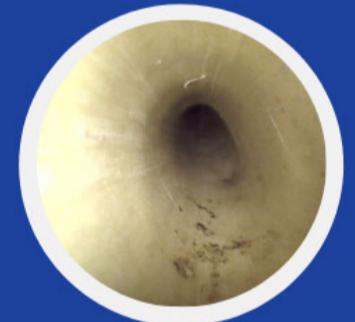
MEDICAL GRADE FLEXIBLE INSPECTION BORESCOPIES



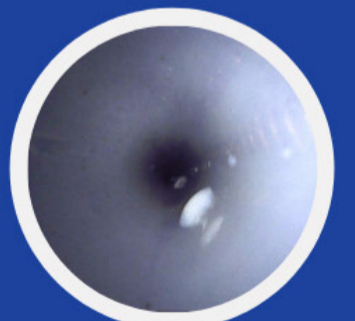
Damage



Debris



Discoloration



Moisture



CLARUS
M E D I C A L

LOOK INSIDE TO COMPLETE YOUR VISUAL INSPECTION

Visualization • Illumination • Magnification • Documentation

CLARUS INSPECTION SCOPES allow for early visual detection of internal debris and damage to reduce risk of costly device-related infections.



DID YOU KNOW?

\$9.8 billion is spent annually treating the top 5 hospital-acquired infections (HAIs).¹ A recent study utilizing a borescope to look inside internal channels found irregularities in 100% of ureteroscopes such as staining or debris.²

ABOUT US

Clarus Medical has over 30 years' experience designing and manufacturing small diameter, high-quality medical endoscopes. We also partner with leading medical companies as their OEM manufacturer.

EASY TO USE

INTERCHANGEABLE DESIGN

New Inspection Control Module can operate ALL scope length and diameter options.

- 1.06mm outer diameter, smallest digital scope on the market
- 1.83mm outer diameter
- Lengths up to 220cm

FLEXIBLE SETUP

- USB Inspection Control Module operates on PC or Tablet
- HDMI Inspection Control Module allows for operation without a PC (no software required)

DURABLE

As a leading inspection borescope designer and manufacturer, we are focused on improved features, durability and performance

DOCUMENTATION

With the ability to capture video and still-frame images, you can document compliance with:

- Scope Quality Assurance
- IFU Cleaning Verification Steps
- Inspection of Loaned Devices



INDUSTRY STANDARDS

ANSI/AAMI ST91: 2015

"Tools such as video borescopes of an appropriate dimension (length and diameter) may be used to visually inspect the internal channels of some medical devices."

2017 AORN Guidelines

"Lighted magnification should be used to inspect endoscopes and accessories for cleanliness and damage."

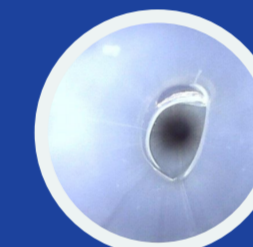
"Endoscopic cameras and borescopes penetrate the lumen and allow for improved visual inspection."

ANSI/AAMI ST79: 2017

"Enhanced inspection with magnification, borescopes, or other inspection methods to verify cleanliness and integrity may be used. Borescopes or other methods may be used to check internal channels of instrumentation..."

Stryker Shaver IFU:

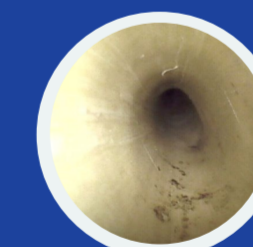
"Visually inspect the handpiece, including all internal surfaces, for remaining soil. Use an endoscopic camera and endoscope if necessary to see the inner surface of the lumen."³



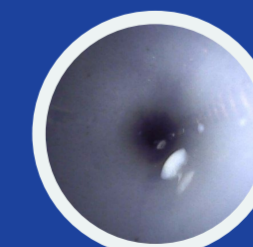
Damage



Debris



Discoloration



Moisture

1. Zimlichman E, Henderson D, Tamir O, Franz C, Song P, Yamin CK, Keohane C, Denham CR, Bates DW. Health Care-Associated Infections. A Meta-analysis of Costs and Financial Impact on the US Health Care System. JAMA Intern Med. 2013;173(22):2039-2046. doi:10.1001/jamainternmed.2013.9763
 2. Ofstead, Wetzler, Heymann, Johnson, Eiland and Shaw, Longitudinal assessment of reprocessing effectiveness for colonoscopes and gastroscopes: Results of visual inspections, biochemical markers, and microbial cultures. American Journal of Infection Control, 2017; 45: e26-e33.
 3. Shaver HandPiece - 1000400638 R-2012/10 INSPECTION - EN 21 - Step 9 www.stryker.com.



CONTACT US

PHONE: 763.525.8450

E-MAIL: INSPECTION@CLARUS-MEDICAL.COM

WEBSITE: WWW.CLARUS-MEDICAL.COM

DON'T BE BLIND TO
DANGERS HIDING INSIDE
YOUR MEDICAL DEVICES.

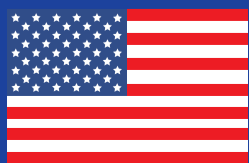
ORDERING INFORMATION

Part Number

CD-USB
CD-HDMI
CB2-60
CB2-110
CB2-200
CB1-110
CD-FM

Description

Clarus Dual Inspection Control Module, USB output
Clarus Dual Inspection Control Module, HDMI output
Clarus Inspection Borescope, OD 1.83 MM, 60 CM working length
Clarus Inspection Borescope, OD 1.83 MM, 110 CM working length
Clarus Inspection Borescope, OD 1.83 MM, 200 CM working length
Clarus Inspection Borescope, OD 1.06 MM, 110 CM working length
Flexible Mount- Control Module



CLARUS
M E D I C A L

900515-001-A